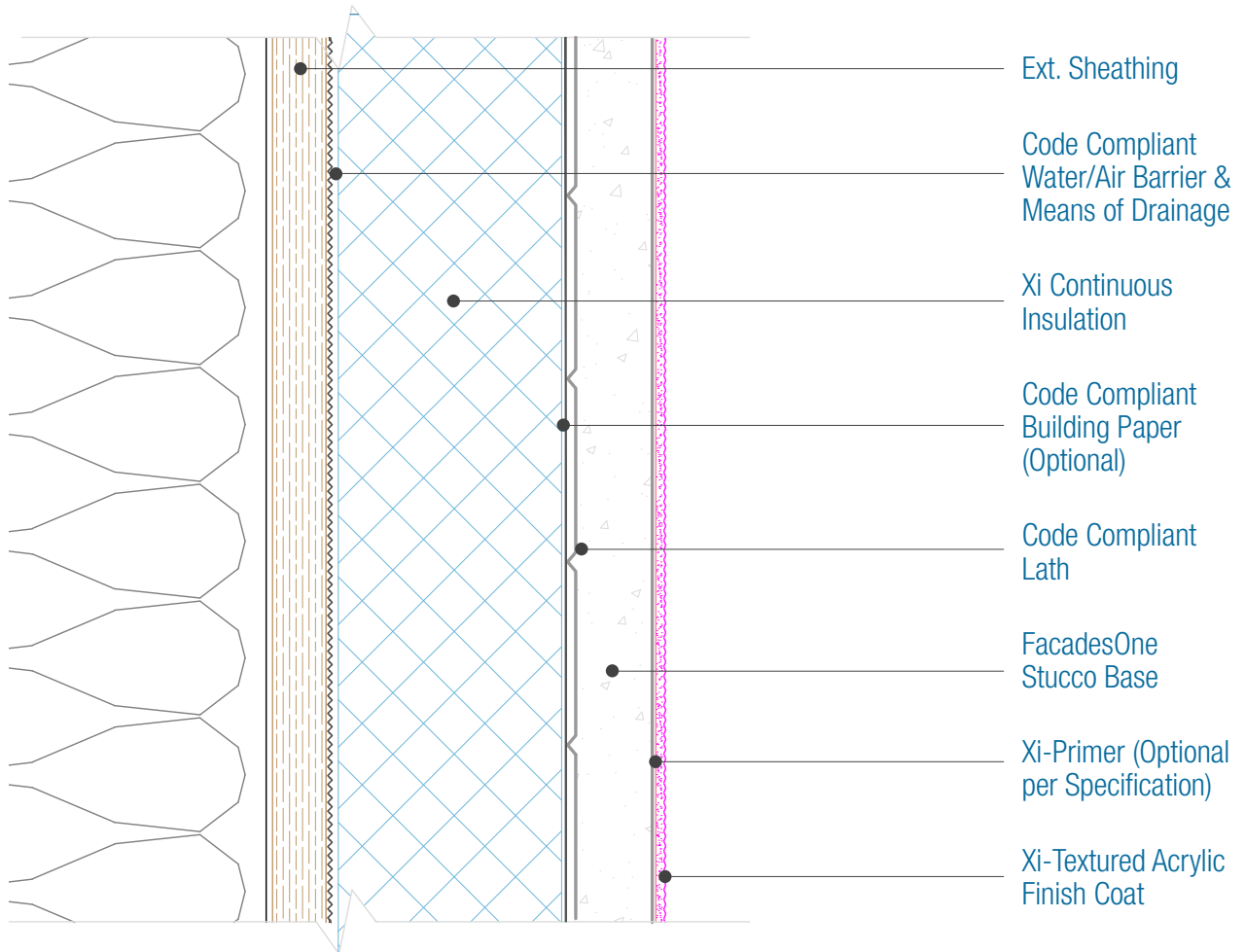




15262 Capital Port
 San Antonio, TX 78249
 1-800-611-6602
 facadesxi.com

FacadesOne Xi-Series Assembly Assembly Overview

Date: 06-15-2020 | Detail: F1XI.I.3 v1



Framing

- Wood Metal

Xi Continuous Insulation

- EPS Polyiso
- XPS Other

Means of Drainage

- Drainage Insulation Board
- Tyvek Stuccowrap/Equal
- Drainage Mat

Sheathing

- OSB
- Plywood
- Cement Board
- Fiberglass Faced
- Gypsum

Xi-Textured Acrylic Finish Coat

- Smooth Fine Coarse

Primer (Optional per specification)

- Xi-Alkali Resistant Primer

Code Compliant Lath

- 2.5lb/yd² Expanded Metal Lath
- Woven Wire Lath
- Plastic Lath
- Per Specifications

FacadesONE Stucco Base

- FacadesOne Concentrate
- FacadesOne Sanded

Water / Air Barrier

- Code compliant by other Mfr

Code Compliant Building Paper

- By Others

DISCLAIMER: FACADESXi details are recommendations that should be used for guidance only. There may be equivalent means of installation that are not shown in FACADESXi assembly details. All FACADESXi products shall be installed in accordance with FACADESXi product datasheets and all applicable building codes and industry standard practices. The design, engineering and final details incorporating any FACADESXi product are the sole responsibility of the project design professional. FACADESXi is not responsible for determining the acceptability and/or applicability of any FACADESXi product or detail for any specific project or condition. FACADESXi disclaims all liability for improper installation, workmanship, or design by a third-party. EXCEPT FOR ANY EXPRESS REPRESENTATIONS AND WARRANTIES BY FACADESXi, ALL IMPLIED WARRANTIES OF ANY KIND, INCLUDING BUT NOT LIMITED TO WARRANTIES OF MERCHANTABILITY OR FITNESS FOR A PARTICULAR PURPOSE OR COMPLIANCE WITH LAWS OR GOVERNMENT RULES OR REGULATIONS APPLICABLE TO THE PROJECT, ARE HEREBY DISCLAIMED. FACADESXi's website should always be consulted for the latest version of any details and/or product information. Contact FACADESXi for any technical assistance.